

Super-Resolution Keyframe Fusion for 3D Modeling with High-Quality Textures

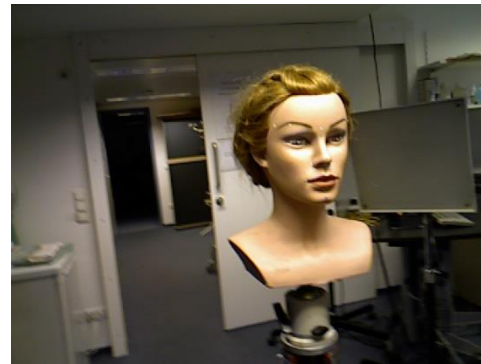
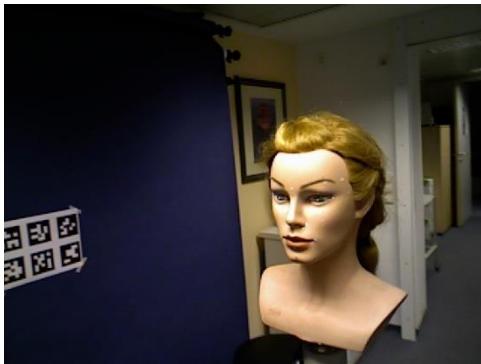
Robert Maier, Jörg Stückler, Daniel Cremers



International Conference on 3D Vision (3DV)
October 2015, Lyon, France

Motivation

Given:



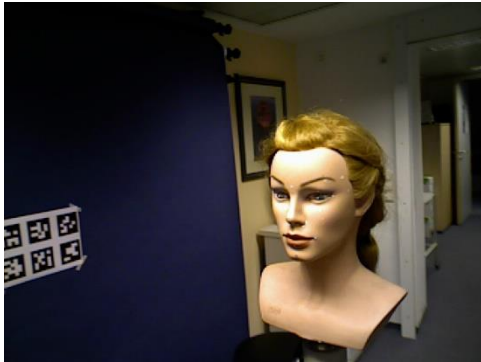
Low-resolution RGB-D frames (640 x 480)



Accurate geometric reconstruction

Motivation

Given:



Low-resolution RGB-D frames (640 x 480)



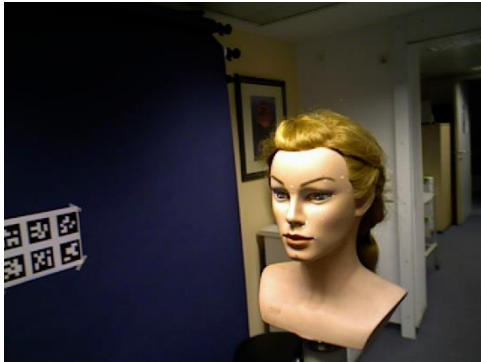
Accurate geometric reconstruction

State-of-the-art w.r.t. visual appearance:

- Vertex colors: limited resolution
- Texture mapping: good-quality results, but slow/impractical

Motivation

Given:



Low-resolution RGB-D frames (640 x 480)



Accurate geometric reconstruction

State-of-the-art w.r.t. visual appearance:

- Vertex colors: limited resolution
- Texture mapping: good-quality results, but slow/impractical

Problem: Gap in research of fast and robust estimation of high-quality visual appearance from low-cost RGB-D sensors

Texture Mapping with Super-Resolution Keyframes

- Our Approach:

Texture Mapping with Super-Resolution Keyframes

- Our Approach:
 - Super-resolution (SR) Keyframe Fusion and Deblurring

Texture Mapping with Super-Resolution Keyframes

- Our Approach:
 - Super-resolution (SR) Keyframe Fusion and Deblurring
 - Texture Mapping using SR keyframes (weighted median)

Texture Mapping with Super-Resolution Keyframes

- Our Approach:
 - Super-resolution (SR) Keyframe Fusion and Deblurring
 - Texture Mapping using SR keyframes (weighted median)



Vertex colors



Our approach



Related Work

Related Work

- Vertex colors (weighted average)
 - Newcombe et al., KinectFusion: Real-time dense surface mapping and tracking. ISMAR 2011
 - Sturm et al., CopyMe3D: Scanning and printing persons in 3D. GCPR 2013

Related Work

- Vertex colors (weighted average)
 - Newcombe et al., KinectFusion: Real-time dense surface mapping and tracking. ISMAR 2011
 - Sturm et al., CopyMe3D: Scanning and printing persons in 3D. GCPR 2013
- Texture Mapping
 - Weighted Median [Coorg and Teller. Automatic extraction of textured vertical facades from pose imagery. 1998]
 - Single input view per face, minimize seams [Gal et al., Seamless montage for texturing models. 2010]
 - Variational super-resolution [Goldlücke et al., A super-resolution framework for high-accuracy multiview reconstruction, IJCV 2014]

Related Work

- Vertex colors (weighted average)
 - Newcombe et al., KinectFusion: Real-time dense surface mapping and tracking. ISMAR 2011
 - Sturm et al., CopyMe3D: Scanning and printing persons in 3D. GCPR 2013
- Texture Mapping
 - Weighted Median [Coorg and Teller. Automatic extraction of textured vertical facades from pose imagery. 1998]
 - Single input view per face, minimize seams [Gal et al., Seamless montage for texturing models. 2010]
 - Variational super-resolution [Goldlücke et al., A super-resolution framework for high-accuracy multiview reconstruction, IJCV 2014]
- RGB-D based 3D Reconstruction
 - Super-resolution RGB-D keyframes [Meilland and Comport. Super-resolution 3D tracking and mapping. ICRA 2013]
 - Optimization of camera poses and non-rigid correction [Zhou and Koltun. Color map optimization for 3D reconstruction with consumer depth cameras. TOG 2014]

Related Work

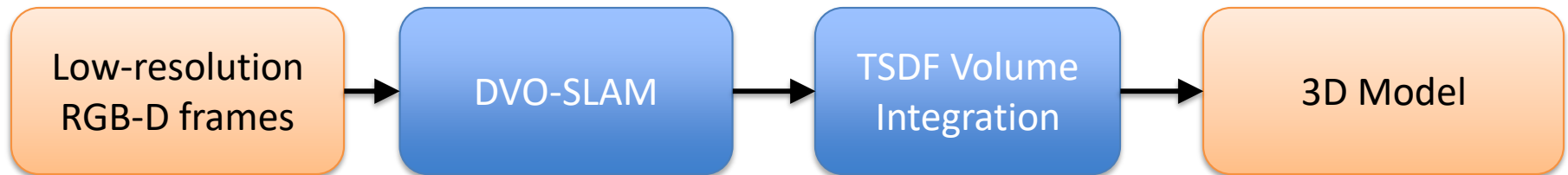
- Vertex colors (weighted average)
 - Newcombe et al., KinectFusion: Real-time dense surface mapping and tracking. ISMAR 2011
 - Sturm et al., CopyMe3D: Scanning and printing persons in 3D. GCPR 2013
- Texture Mapping
 - Weighted Median [Coorg and Teller. Automatic extraction of textured vertical facades from pose imagery. 1998]
 - Single input view per face, minimize seams [Gal et al., Seamless montage for texturing models. 2010]
 - Variational super-resolution [Goldlücke et al., A super-resolution framework for high-accuracy multiview reconstruction, IJCV 2014]
- RGB-D based 3D Reconstruction
 - Super-resolution RGB-D keyframes [Meilland and Comport. Super-resolution 3D tracking and mapping. ICRA 2013]
 - Optimization of camera poses and non-rigid correction [Zhou and Koltun. Color map optimization for 3D reconstruction with consumer depth cameras. TOG 2014]
- **Contribution: Texture Mapping using Super-resolution Keyframes**

System Overview

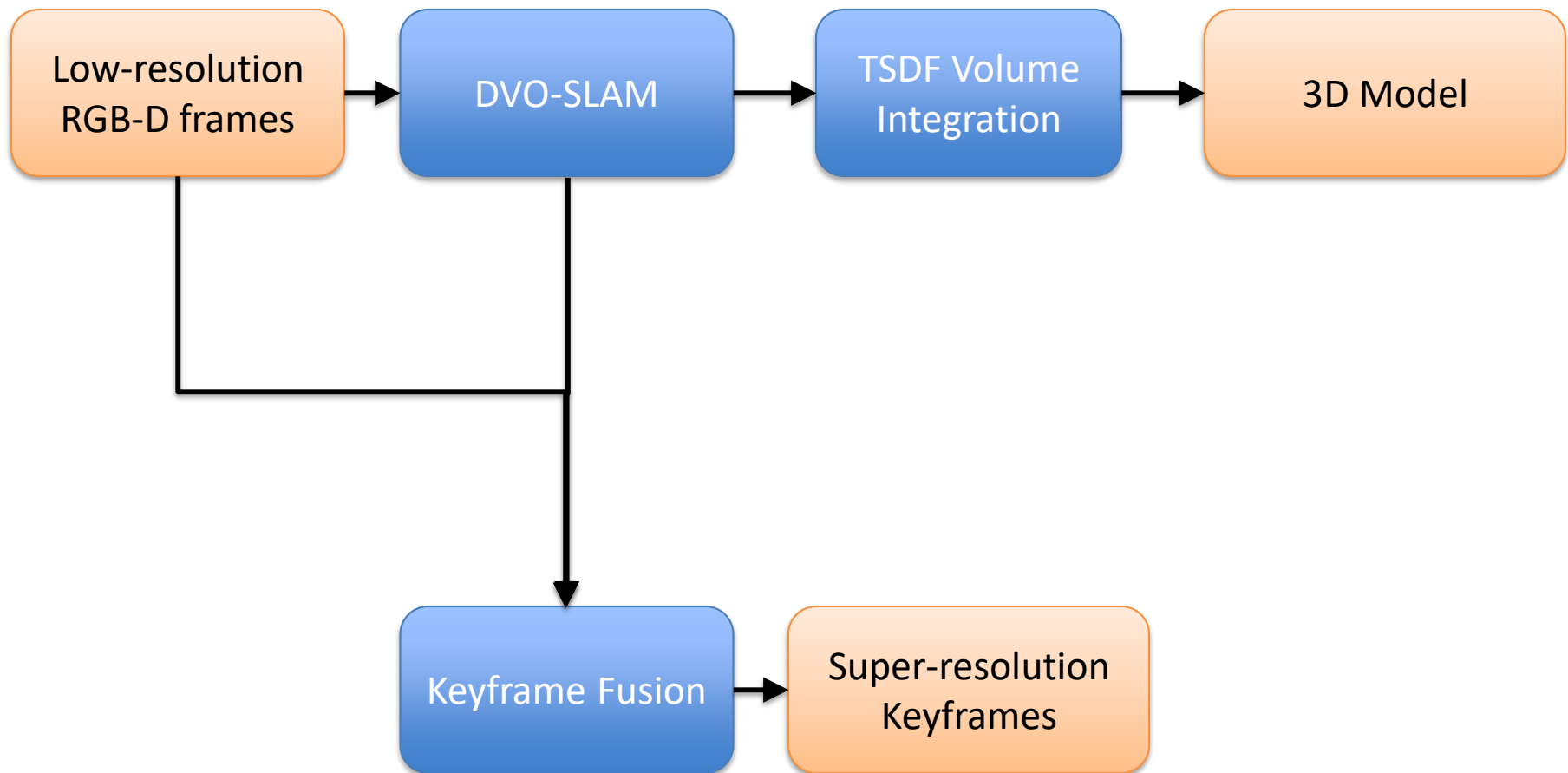
System Overview

Low-resolution
RGB-D frames

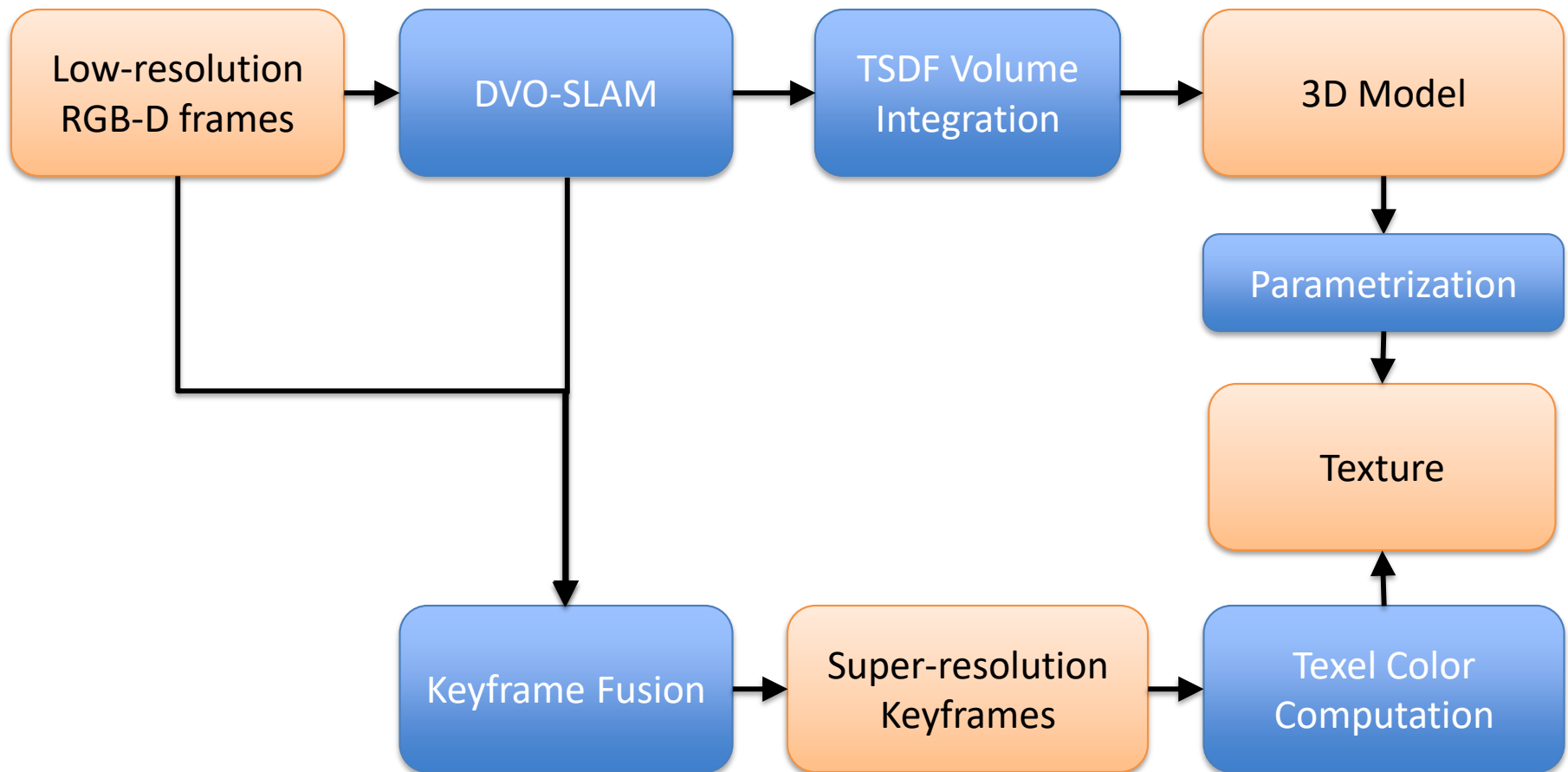
System Overview



System Overview



System Overview



Geometric 3D Reconstruction

Geometric 3D Reconstruction

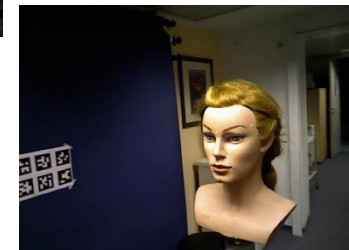
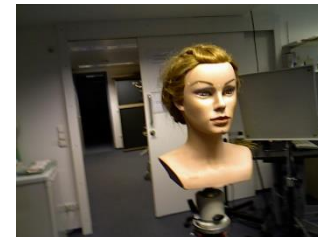
- DVO-SLAM: camera trajectory
 - [Kerl et al., Dense visual slam for RGB-D cameras. IROS 2013]
 - Real-time 3D reconstruction on a CPU
 - Robust Dense Visual Odometry
 - Loop closure detection + pose graph optimization

Geometric 3D Reconstruction

- DVO-SLAM: camera trajectory
 - [Kerl et al., Dense visual slam for RGB-D cameras. IROS 2013]
 - Real-time 3D reconstruction on a CPU
 - Robust Dense Visual Odometry
 - Loop closure detection + pose graph optimization
- Model Fusion (TSDF Volume): 3D mesh

Vertex Color Computation

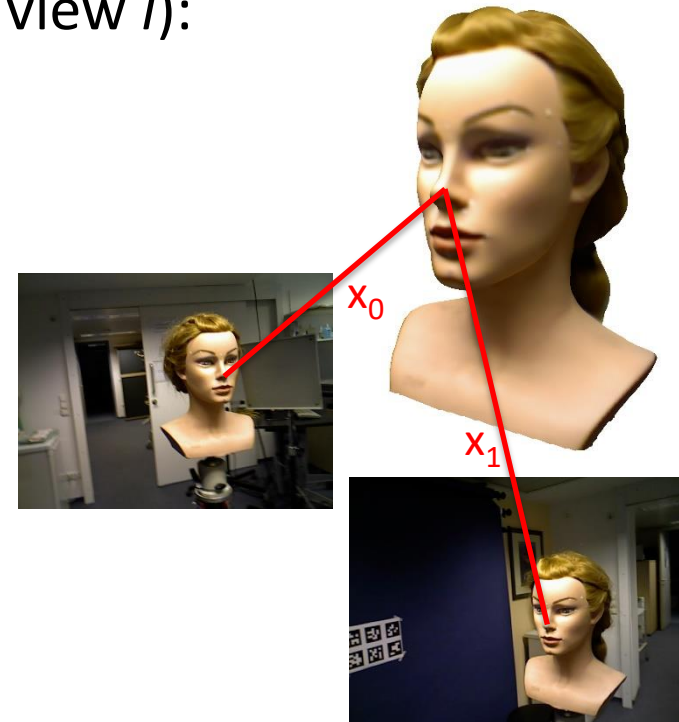
- Mesh vertex v , input views C_i (blur measure b_i), camera poses ξ_i



Vertex Color Computation

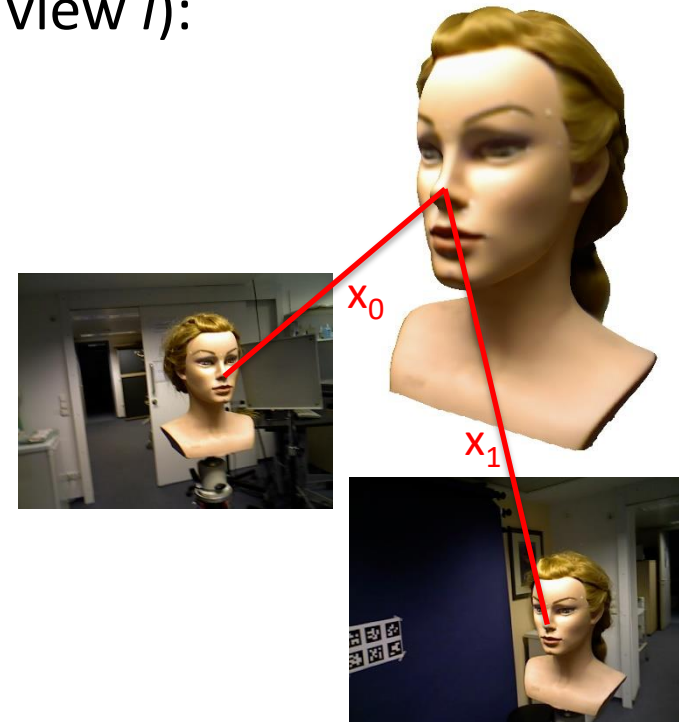
- Mesh vertex v , input views C_i (blur measure b_i), camera poses ξ_i
- Compute observations (x_i is obs. of v in view i):

$$x_i = C_i(\pi(v, \xi_i))$$



Vertex Color Computation

- Mesh vertex v , input views C_i (blur measure b_i), camera poses ξ_i
- Compute observations (x_i is obs. of v in view i):
$$x_i = C_i(\pi(v, \xi_i))$$
- Discard x_i close to depth discontinuities



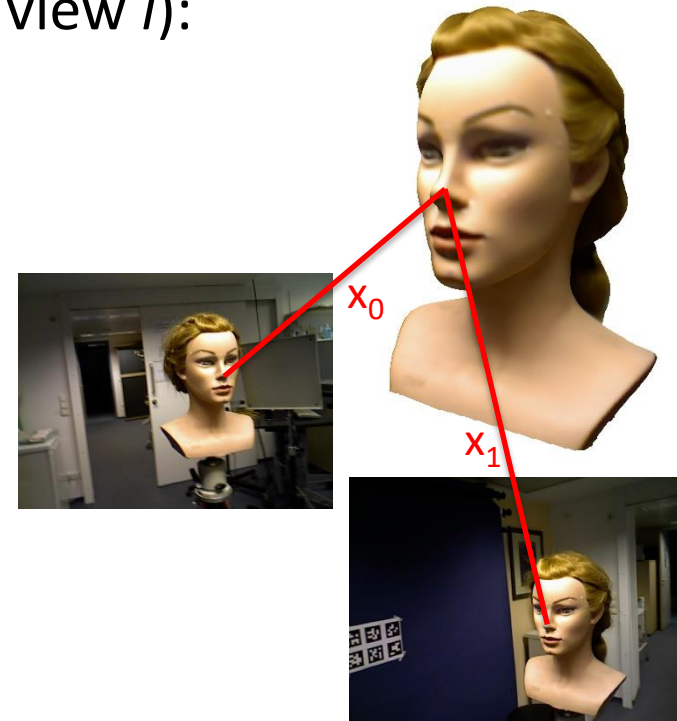
Vertex Color Computation

- Mesh vertex v , input views C_i (blur measure b_i), camera poses ξ_i
- Compute observations (x_i is obs. of v in view i):

$$x_i = C_i(\pi(v, \xi_i))$$

- Discard x_i close to depth discontinuities
- Weights of obs. x_i :

$$w_i = \frac{\cos(\theta) * b_i}{d^2}$$



Vertex Color Computation

- Mesh vertex v , input views C_i (blur measure b_i), camera poses ξ_i
- Compute observations (x_i is obs. of v in view i):

$$x_i = C_i(\pi(v, \xi_i))$$

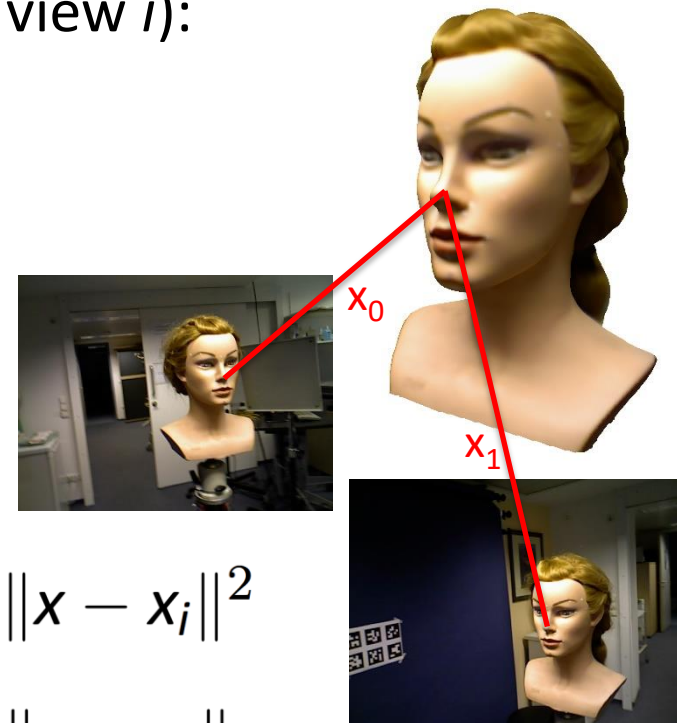
- Discard x_i close to depth discontinuities
- Weights of obs. x_i :

$$w_i = \frac{\cos(\theta) * b_i}{d^2}$$

- Compute vertex color x :

- Weighted mean: $\arg \min_x \sum_{x_i} w_i \|x - x_i\|^2$

- Weighted median: $\arg \min_x \sum_{x_i} w_i \|x - x_i\|$



Vertex Color Computation



Unweighted Mean

Weighted Mean

Weighted Median

Texture Mapping using SR Keyframes

- Per-vertex colors: limited resolution
- Increase resolution: Texture
- Approach:
 - SR Keyframe Fusion
 - Texture Mapping from SR keyframes

Keyframe Fusion

- Idea: fuse low-resolution (LR) input RGB-D frames into high resolution RGB-D keyframes

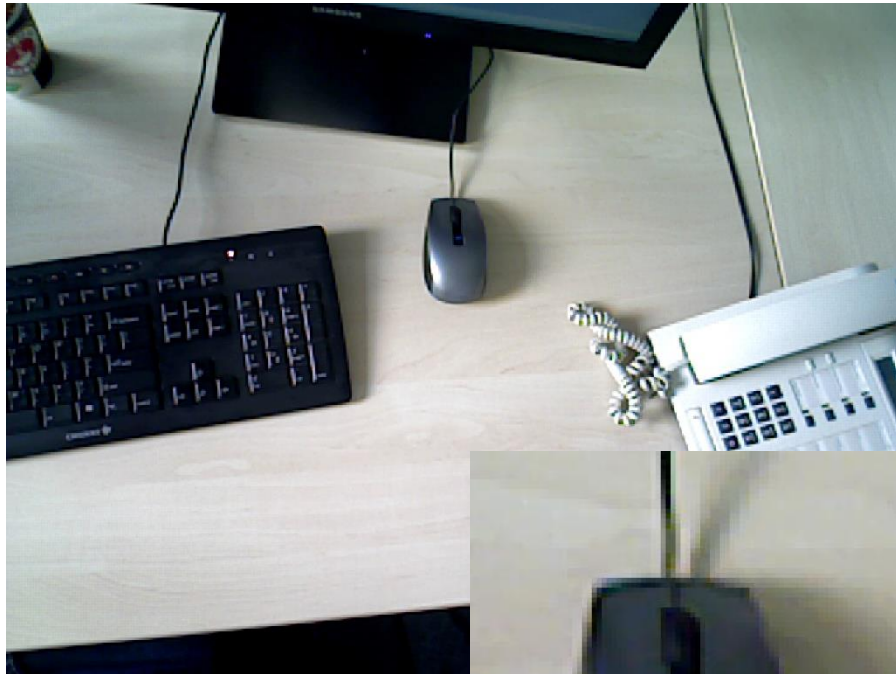
Keyframe Fusion

- Idea: fuse low-resolution (LR) input RGB-D frames into high resolution RGB-D keyframes
 - Depth fusion
 - Warp LR depth maps into keyframe (using relative poses)
 - Upsample and fuse depth using weighted averaging

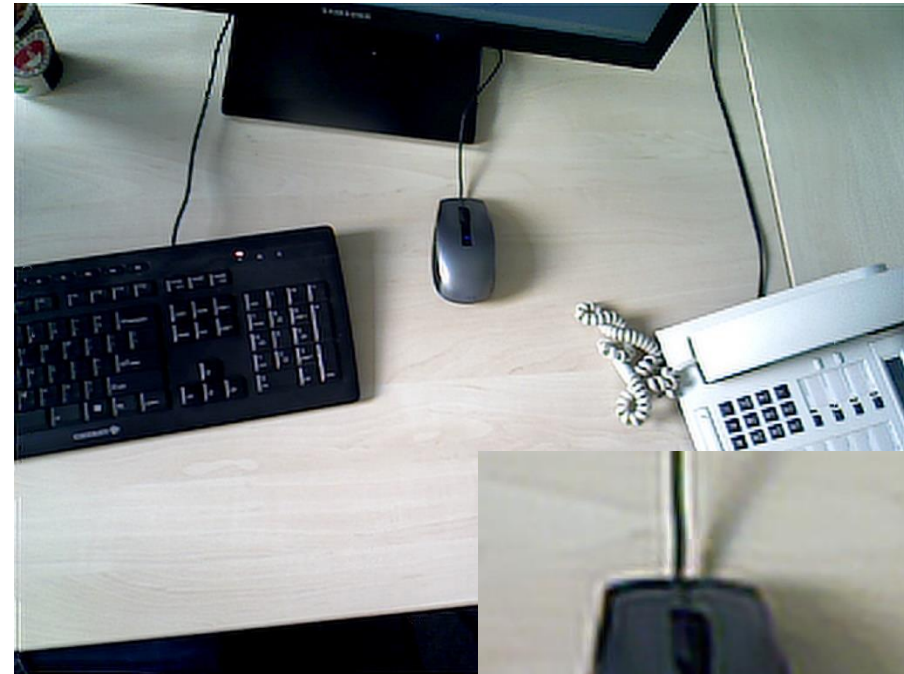
Keyframe Fusion

- Idea: fuse low-resolution (LR) input RGB-D frames into high resolution RGB-D keyframes
 - Depth fusion
 - Warp LR depth maps into keyframe (using relative poses)
 - Upsample and fuse depth using weighted averaging
 - Color fusion
 - Deconvolution: Wiener Filter on LR input images
 - Warp fused keyframe depth to input images for color lookup
 - Fuse colors using weighted median

Keyframe Fusion



LR input image



Fused SR keyframe



Texture Mapping using SR Keyframes

Texture Mapping using SR Keyframes

- Texture Parametrization: One-to-one mapping between 3D mesh and 2D texture

Texture Mapping using SR Keyframes

- Texture Parametrization: One-to-one mapping between 3D mesh and 2D texture
- Texel color computation:
 - Compute 3D vertex for 2D texel (based on enclosing triangle using barycentric coordinates)
 - Compute color from SR keyframes analogous to per-vertex recoloring scheme (weighted median)

Qualitative Evaluation: Deconvolution



Without deconvolution



With deconvolution

Qualitative Evaluation: SR Keyframe resolution



Keyframe dimensions 1280 x 960
(scale $s = 2$)



Keyframe dimensions 2560 x 1920
(scale $s = 4$)

Qualitative Evaluation: LR input frames vs. SR keyframes



With LR input frames



With SR keyframes

Runtime Evaluation

Datasets:

	<i>face</i>	<i>phone</i>	<i>keyboard</i>
# RGB-D frames	512	1359	642
# vertices (original)	159583	82942	155842
# triangles (original)	319176	165888	311686
# triangles (decimated)	40000	40000	40000

Runtime Evaluation

Datasets:

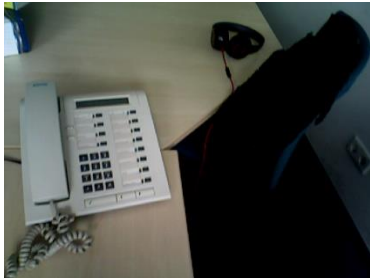
	<i>face</i>	<i>phone</i>	<i>keyboard</i>
# RGB-D frames	512	1359	642
# vertices (original)	159583	82942	155842
# triangles (original)	319176	165888	311686
# triangles (decimated)	40000	40000	40000

Runtimes:

	<i>s</i>	<i>face</i>		<i>phone</i>		<i>keyboard</i>	
		t [s]	fps	t [s]	fps	t [s]	fps
Texture Mapping		91.5	5.6	330.8	4.1	128.8	5.0
Keyframe Fusion	2	57.5	8.9	222.0	6.1	72.1	8.9
SR Texture Mapping	2	18.7	2.8	50.7	2.7	18.8	3.5
Keyframe Fusion	4	100.9	5.1	362.8	2.2	214.9	3.0
SR Texture Mapping	4	26.4	2.0	58.2	1.4	42.6	1.5

(Standard desktop PC with Intel Core i7-2600 CPU with 3.40GHz and 8GB RAM)

Phone dataset



RGB input images



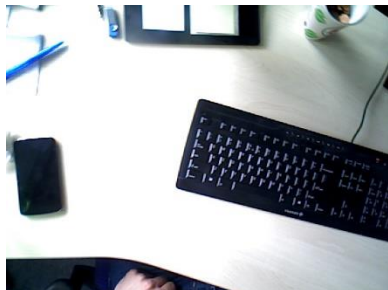
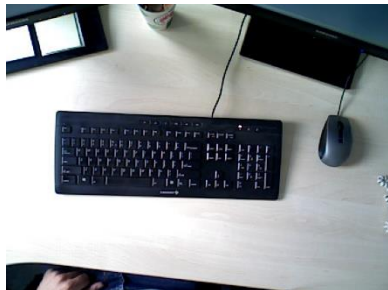
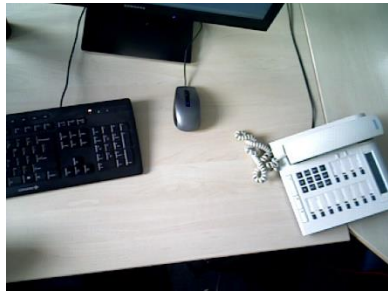
Vertex colors



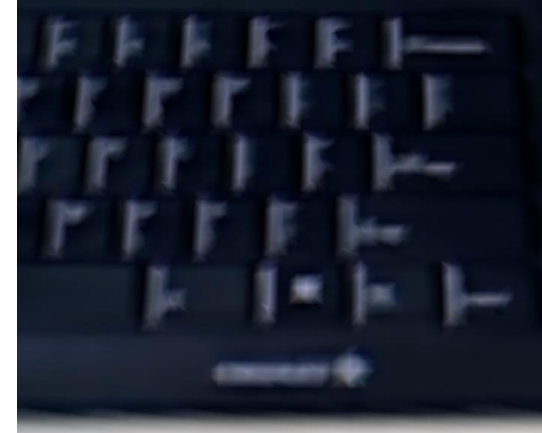
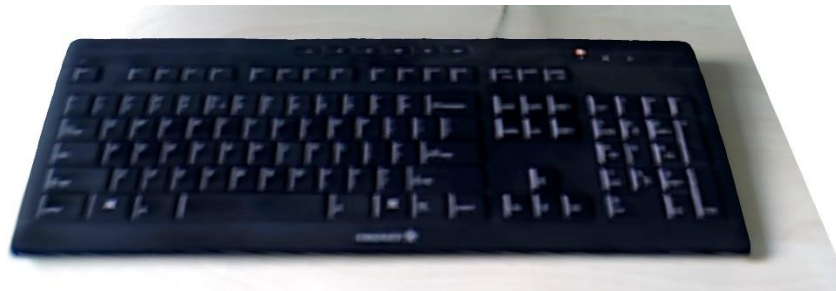
Our approach



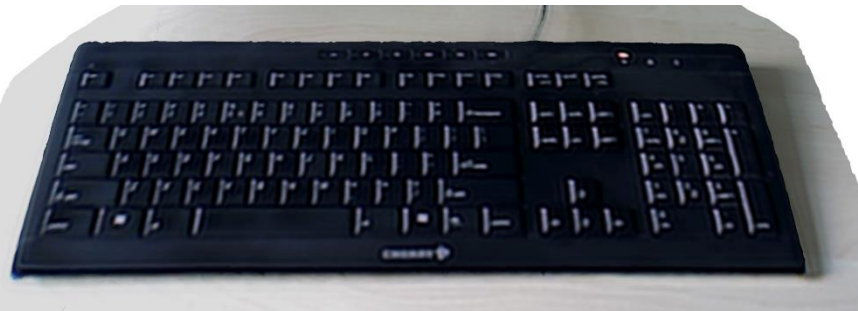
Keyboard dataset



Vertex colors



Our approach



RGB input images

Conclusion

- **Robust** and **efficient** method for high-quality texture mapping in RGB-D-based 3D reconstruction

Conclusion

- **Robust** and **efficient** method for high-quality texture mapping in RGB-D-based 3D reconstruction
 - Fuse low-quality color images into **SR keyframes**

Conclusion

- **Robust** and **efficient** method for high-quality texture mapping in RGB-D-based 3D reconstruction
 - Fuse low-quality color images into **SR keyframes**
 - **Map** high-quality keyframes onto 3D model **texture** using **weighted median** scheme

Conclusion

- **Robust** and **efficient** method for high-quality texture mapping in RGB-D-based 3D reconstruction
 - Fuse low-quality color images into **SR keyframes**
 - **Map** high-quality keyframes onto 3D model **texture** using **weighted median** scheme
- Experimental results:
 - **Increased photo-realism** of reconstructed 3D models
 - Very **efficient** and **practical** post-processing step (runtimes within a few minutes)

Conclusion

- **Robust** and **efficient** method for high-quality texture mapping in RGB-D-based 3D reconstruction
 - Fuse low-quality color images into **SR keyframes**
 - **Map** high-quality keyframes onto 3D model **texture** using **weighted median** scheme
- Experimental results:
 - **Increased photo-realism** of reconstructed 3D models
 - Very **efficient** and **practical** post-processing step (runtimes within a few minutes)

Thank you!